

EX PANEL LIGHT

EX600P / 1200P / 1800P

FOMEX[®]

Contents

In the box	2
Accessories (Optional).....	2
How to connect	3
How to install Difusser	3
How to use Panel light	4~5
How to install Accessory (Softbox or Barn Door).....	5
Specification	6
Notice	7
Warranty	7

*The image of this manual is based on EX1200P.

Same with the components and the installation method for each panel series,
but the sizes are different.

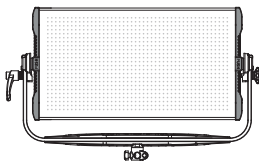
This product is a portable panel light.

Please read this operation instruction before using the product.

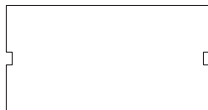
Stop using this product when abnormal operation is detected and contact the store or A/S center.

In the box

EX 600P / 1200P / 1800P Kit



Panel Light body



Diffuser



Power Supply

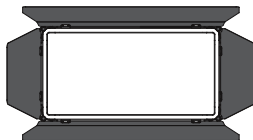


Power Cord

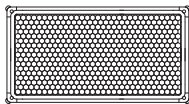
Accessories (Optional)



Softbox with Frame



Barn Door with Frame



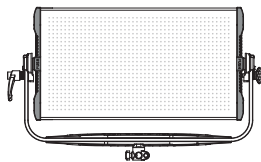
Honeycomb with Frame



Kit Bag

How to connect

Please connect to Power Supply in the following order.



Panel Light body



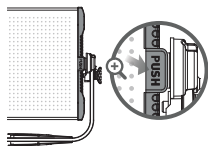
Diffuser



Power Supply

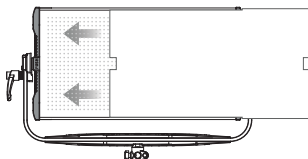
Power Cord

How to install Diffuser



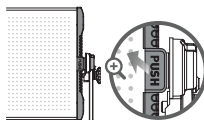
1

Press 'PULL' lever on the left/right side of the panel light.



2

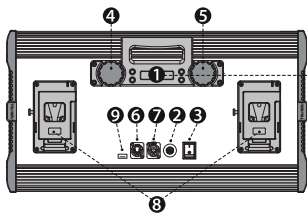
Insert diffuser into the upper/down inner slot at the frame.



3

Pull the lever to fix the diffuser.

How to use Panel light



DETAIL



1 How to use buttons

To Set LOCK Mode : 2~3 seconds press 'MODE' button once, on the LCD display window 'LOCK' displays and is set. (Note : when 'LOCK' mode is set, CCT and DIM can't be changed)

To Unlock : In 'LOCK' mode, when 2~3 seconds press 'ADJUST' button once, 'LOCK' disappears from the LCD display window and is released.

To Set QUICK Mode : Short-press 'MODE' button once, on the LCD display window 'QUICK' displays and is set. (Note : selectable CCT using Q1▲/Q2▼ button. Default value: 3200K/Q1(▲) 5600K/Q2(▼) *Changeable CCT using Q1▲/Q2▼ button and select CCT 3200K or 5600K. Press 'ADJUST' button and the CCT value is blinking. At this time, please turn the CCT dial to select CCT and press 'ADJUST' button to set.)

To Turn QUICK Mode Off : In 'QUICK' mode, when press 'MODE' button once, 'QUICK' disappears from the LCD display window. And 'QUICK' is released and transfer to DMX Address setting Mode. (At this time, CCT is automatically going back to the previous value used in normal mode.)

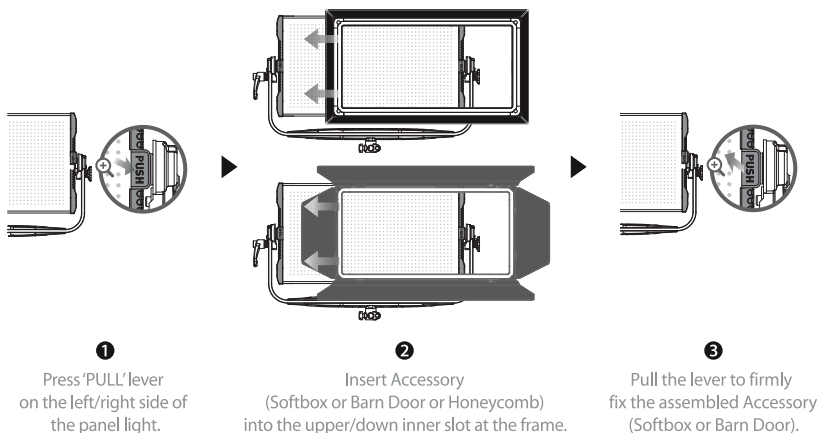
To Set DMX Address : Press 'MODE' button twice, on the LCD display window 'DMX' appears and address is blinking. At this time, set DMX address using Q1▲/Q2▼ button. Please press 'ADJUST' button to save the address, then it switch to normal mode. (Note : when it is connected with DMX console, DMX mode is automatically set and the following is how to set DMX address. – Press 'MODE' button once. When address is blinking, please set the address using Q1▲/Q2▼ button and press 'ADJUST' button to save the address.)

How to rest to default : Press and hold Q1▲ button, and press Q2▼ button for 2~3seconds.

* Sequence of Mode Conversion (Normal mode → QUICK mode → DMX address setting mode → Normal mode)

- ② Connect DC power input connector to the controller when using the power supply.
- ③ Turn on/off with ON/OFF switch on the back.
- ④ Adjust color temperature with the left CCT dial.
The value from 2700k to 6500k will be displayed on the LCD display window.
- ⑤ Adjust brightness with the right DIM dial.
The value from 0% to 100% will be displayed on the LCD display window.
- ⑥ When using DMX, please connect the cord of DMX Console.
If DMX connection is normal, green LED lamp is on under the DMX Input connector.
- ⑦ Connect DMX control cord to other LED lights.
- ⑧ Available to use battery pack with attached V-Mount or Gold-Mount (Optional) instead of power supply.
- ⑨ USB port to supply power for Wireless DMX

How to install Accessory (Softbox or Barn Door or Honeycomb)



Specification

	EX 600P	EX 1200P	EX 1800P
Light Output	1900lux @1m; 2700K 2000lux @1m; 6500K	3800lux @1m; 2700K 4000lux @1m; 6500K	5700lux @1m; 2700K 6000lux @1m; 6500K
Power Consumption	60W	120W	180W
CRI / TlCI	CRI 96~98 / TlCI 98		
Color Temperature	2700K- 6500K		
Dimmer	0~100% DIM / DMX 512 / Manual		
Color Temperature	100K Steps		
Light Output Connector	4Pin Waterproof		
DC Input	DC 12~24V (4Pin)		
DC Out	DC 5V (USB Port for WDMX)		
DMX In / Out	5Pin XLR		
Display	Mono LCD		
Beam Angle	120°		
LEDs	576	1152	1728
Battery Mounts		V-Mount / Gold Mount	
Dimensions (mm)	385 X 317 X 88	665 X 317 X 88	945 X 317 X 88
Weight	2.8Kg	4.5Kg	6.0Kg
Power Supply	Input	AC100 ~ 240V 50/60Hz	
	Output	DC 19V, 4.736A	DC 19V, 7.9A

Notice

1. Must use supplied Power Supply only. Otherwise, it may cause a problem.
2. Do not use in rain or in a humid place.
3. Do not close to flammable objects.
4. Operating temperature range is 0°C ~ 40°C.
5. Handle with care when you use for a long time because the heat may occur.
6. Keep away from children.
7. Do not handle with a wet hand.
8. Do not drop or shock on the product.
9. Turn off the power after use and keep in Kit Bag after cooling enough.
10. Cannot receive A/S warranty with self-repair, and we're not responsible for product damage.

Warranty

Warranty provisions for this product are listed below:

1. Guarantee this product for ONE Year against defects in product and components (except consumable spare parts). The purchase date is considered as the date registered on the warranty card when buying the product.
2. During the warranty period, repair the defects using new or renovated parts without any charge, or exchange the defective product with a new product or a product which has been manufactured by new or refurbished components and is functionally equivalent to the normal product.
3. Apply only to the original product that can be identified by the trademark, trade name, or logo affixed to the product.

Inapplicable Warranty

1. Expired warranty period.
2. Breakage or damage caused by inappropriate usage, repair, maintenance and accident.
 - 1) Installation and removal with improper external equipment or improper usage.
 - 2) Fall and external shock.
 - 3) Exposure to the extreme environment of abnormal temperature, a solvent, an acid, a base, a flood and a humid.
 - 4) External damage such as scratch, dent and breakage.
3. Disrepair and damage caused by installation, repair, improvement, addition, disassembly by unauthorized institution or person.
4. Modified, replaced, removed information identifying the original product.
5. Absence of the valid warranty card.
6. Disrepair and damage caused by usage of illegal nonstandard and unofficial software.

Please keep this warranty card after writing information at the purchase as it is necessary for applying for services.

Customer Information	Name	
	Contact Number	
	Address	
Seller Information	Name	
	Contact Number	
	Address	
	Purchasing date	
Product	Name	



www.fomex.com

Unit701, 31-18Gil, Seongsui-ro, Seongdong-gu, Seoul Korea 04787

Tel: +82 2 545 0004 Fax: +82 2 3444 9399 E-mail: info@fomex.com

All product specifications are subject to change without notice

VER. 201806(EN)